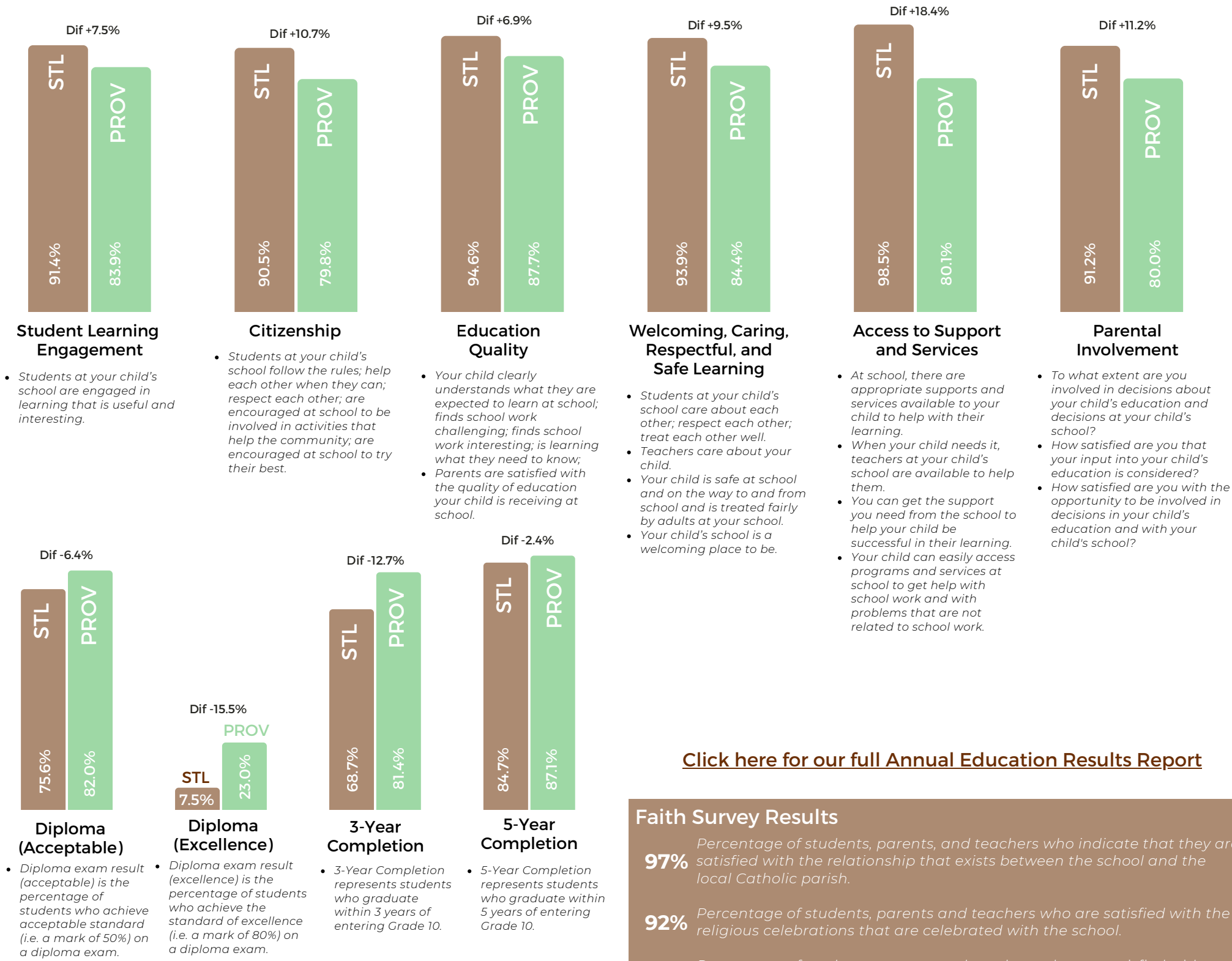


# ALBERTA ASSURANCE ANNUAL EDUCATION RESULTS

Alberta Education Assurance is a set of 12 performance measures calculated by Alberta Education for schools and school boards across the province. Schools and school boards are evaluated based on achievement, improvement, and overall performance.



[Click here for our full Annual Education Results Report](#)

## Faith Survey Results

- 97%

Percentage of students, parents, and teachers who indicate that they are satisfied with the relationship that exists between the school and the local Catholic parish.
- 92%

Percentage of students, parents and teachers who are satisfied with the religious celebrations that are celebrated with the school.
- 93%

Percentage of students, parents and teachers who are satisfied with what is being taught in religious education classes.
- 91%

Percentage of students, parents and teachers who indicate they are satisfied with the level of Catholic faith formation of students at the school.
- 92%

Percentage of students, parents and teachers who indicate they are satisfied with the efforts to live our Catholic Social Teaching at school.

### Insight:

St. Luke's staff continually strive to be role models and to actively live our faith and provide witness every day to our students. St. Luke's spirit is a true reflection of the parable of the Prodigal Son: just as the father welcomed his son home, the staff and the students welcome each other to share in the beauty of the Catholic faith. St. Luke's exemplifies, "Leave Not One Heart Behind".

## Insights

- Welcome, Caring, Respectful and Safe Learning Environment:** Although always well above the provincial average, this measure continues to improve at St. Luke's! We are at an all-time high of 93.9% satisfied, 9.5% above the province. St. Luke's provides a warm and welcoming learning environment accomplished through our pastoral approach.
- Access to Supports and Services:** St. Luke's has a Family School Liaison worker that provides services to all three campuses. Students have access to a variety of programs and services to help them outside of the school. Teachers and support staff are available to help our students succeed as they learn. 98.5% of our stakeholders are satisfied, 18.4% above the province and also an increase from last year's 95.8%.
- 5 Year Completion:** A measure on the rise at St. Luke's! Although just 2.4 % below the province, 84.7% of our students are graduating within 5 years of entering Grade 10. Some students need a little extra time to graduate and all students are welcome at St. Luke's. We also provide the opportunity for upgraders to enroll at St. Luke's to prepare for post-secondary.